



**REGIONAL SPECIALISED METEOROLOGICAL CENTRE-TROPICAL CYCLONES, NEW DELHI
TROPICAL WEATHER OUTLOOK**

DEMS-RSMCTROPICALCYCLONESNEWDELHIDATED 28.01.2025

TROPICAL WEATHER OUTLOOK FOR THE NORTH INDIAN OCEAN (THE BAY OF BENGAL AND THE ARABIAN SEA) VALID FOR THE NEXT 168 HOURS ISSUED AT 0600 UTC OF 28.01.2025 BASED ON 0300 UTC OF 28.01.2025.

BAY OF BENGAL:

Scattered low and medium clouds with embedded moderate to intense convection lay over south Bay of Bengal & south Andaman Sea and isolated weak to moderate convection lay over central Bay of Bengal & north Andaman Sea.

***PROBABILITY OF CYCLOGENESIS (FORMATION OF DEPRESSION) DURING NEXT 168 HRS:**

24 HOURS	24-48 HOURS	48-72 HOURS	72-96 HOURS	96-120 HOURS	120-144 HOURS	144-168 HOURS
NIL	NIL	NIL	NIL	NIL	NIL	NIL

*NOTE: EVERY 24HR FORECAST IS VALID UPTO 0300 UTC (0830 IST) OF NEXT DAY

ARABIAN SEA:

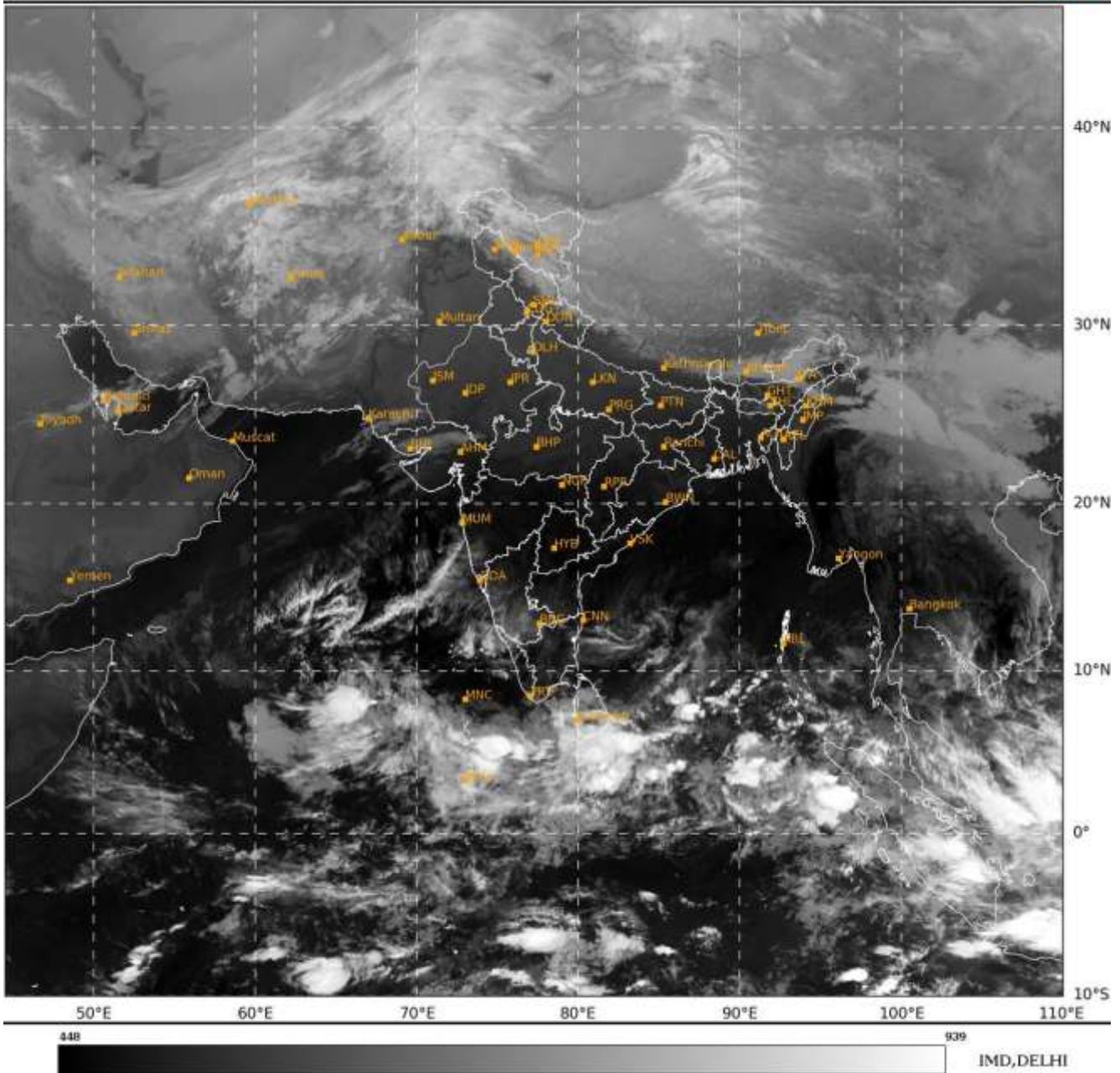
Scattered low and medium clouds with embedded moderate to intense convection lay over eastcentral & south Arabian Sea, Lakshadweep Island area, Maldives & Comorin area. Scattered low and medium clouds with embedded isolated weak to moderate convection lay over north Arabian Sea, Gulf of Kutch & the westcentral Arabian Sea.

***PROBABILITY OF CYCLOGENESIS (FORMATION OF DEPRESSION) DURING NEXT 168 HRS:**

24 HOURS	24-48 HOURS	48-72 HOURS	72-96 HOURS	96-120 HOURS	120-144 HOURS	144-168 HOURS
NIL	NIL	NIL	NIL	NIL	NIL	NIL

*NOTE: EVERY 24HR FORECAST IS VALID UPTO 0300 UTC (0830 IST) OF NEXT DAY

REMARKS: NIL



Cloud distribution: (a) Isolated: <25%, Scattered:25-50%, Broken: 51-75%, Solid:>75%, Convection Intensity: (a) Weak: Cloud Top Temperature(CTT)>-25°C,(b)Moderate:CTT:-25°Cto-40°C,(c)Intense:CTT:-41°Cto -70°Cand(d)VeryIntense::Lessthan -70°C
PROBABILITYOFCYCLOGENESIS(FORMATIONOFDEPRESSION):NIL:0%,LOW:1-33%,MODERATE:34-66%ANDHIGH:67-100%
ThisisaguidanceBulletinforWMO/ESCAPPanelMembercountries.VisitrespectiveNationalwebsitesforCountryspecificBulletins